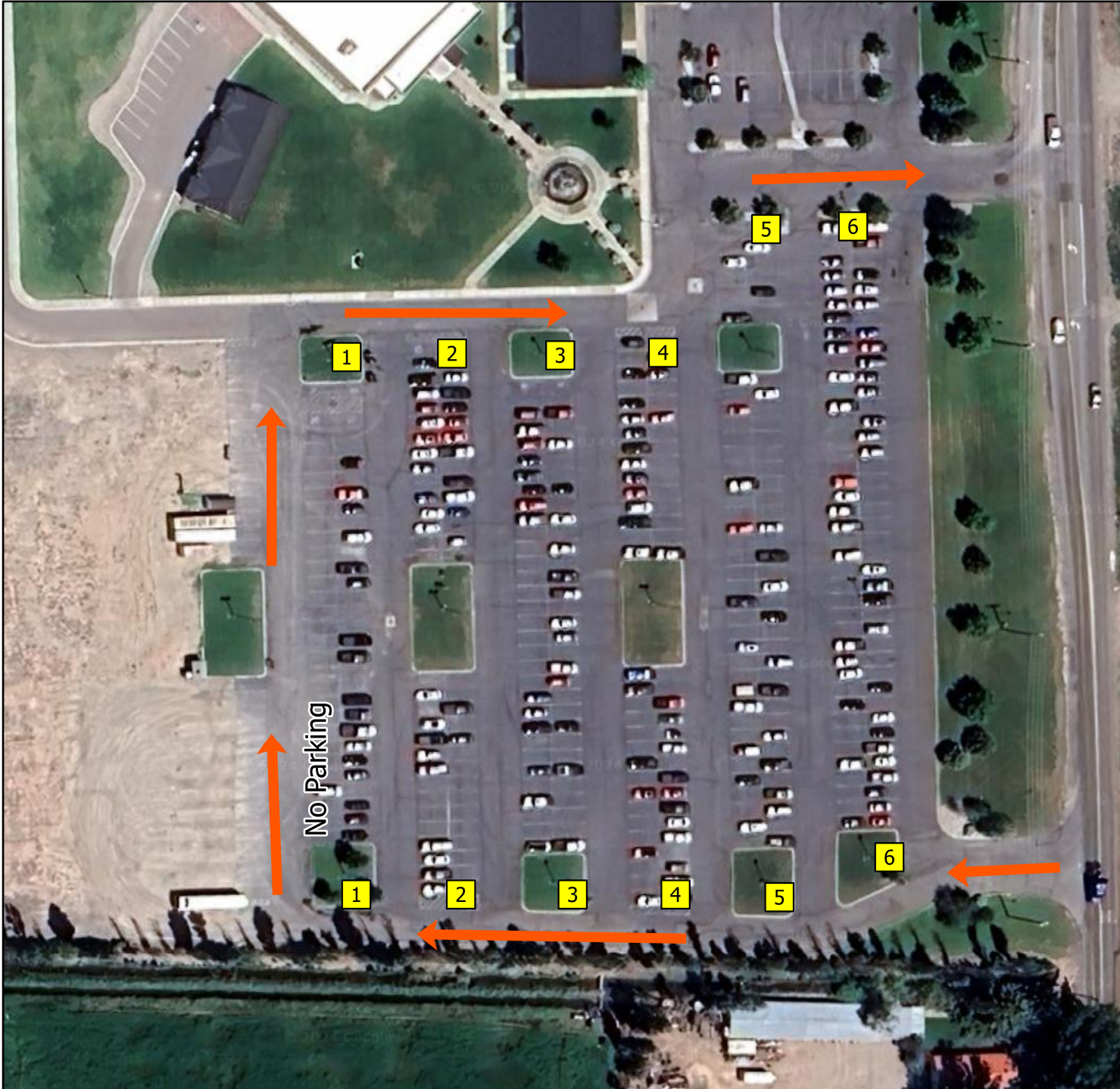




Watersprings (Calvary) Park-n-Ride

4250 South 25th East (Hitt Rd) Idaho Falls, Idaho 83401

Last Updated: 4/1/2024



Load Positions

Load Point 1

Load Point 2

NRF Rt. 69 4:30 am (Mon-Thu)
NRF Rt. 59 5:30 am (Mon-Thu)

Load Point 3

NRF Rt. 68 4:30 am (Mon-Thu)
CFA/ATR Rt. 11 5:40 am (Mon-Thu)

Load Point 4

SMC Rt. 180 5:35 am Mon-Thu

Load Point 5

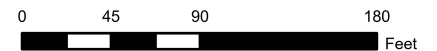
IEC Rt. 2 5:27 am (Mon-Thu)
(INTEC/RWMC/NRF D&D)

Load Point 6

MFC Rt. 101 6:05 am (Mon-Thu)

South end of aisle 6

MFC +1 4:45 am (Mon-Thu)
All CFA Shuttles (Mon-Thu)



GIS Analyst: Mindy Gerdes
Date Drawn: 3/14/2024
Path: Z:\Projects\INL\BusZones\BusZones.aprx
File Name: Watersprings.pdf
<https://geospatial.inl.gov>