



# BlackfootPnR

537 US-Hwy 26 Blackfoot, Idaho 83221

Last Updated: 11/20/2023

## Load Positions

### Load Point 1

### Load Point 2

NRF Rt. 260 4:27 am (Mon-Thu)  
NRF Rt. 360 4:45 am (Mon-Thu)  
NRF Shift Rt. 283 5:32 am (Mon-Sun & hol)  
NRF Rt. 251 5:47 am (Mon-Fri)

Outbound Shuttle 12:42 pm (Mon-Thu)

NRF Swing Rt. 284 12:42 pm (Mon-Thu)  
NRF Shift Rt. 283 5:32 pm (Mon-Sun & hol)

### Load Point 3

NRF Rt. 361 4:45 am (Mon-Thu)

### Load Point 4

CFA/ATR Rt. 302 5:57 am (Mon-Thu)

### Load Point 5

BEA Exp Rt. 223 5:32 am (Mon-Thu)  
BEA/IEC Shift Rt. 213 5:52 am (Fri-Sun & hol)

All Inbound Shuttles (Outbound leaves from Load Point 2)

BEA/IEC Shift Rt. 213 5:52 pm (Fri-Sun & hol)

### Load Point 6

IEC Exp Rt. 224 5:32 am (Mon-Thu)  
IEC Rt. 202 5:57 am (Mon-Thu)  
(INTEC/RWMC/NRF D&D)

### Load Point 7

AMWTP Rt. 209 5:02 am (Mon-Sun & hol)  
AMWTP Rt. 346 5:33 am (Mon-Thu)

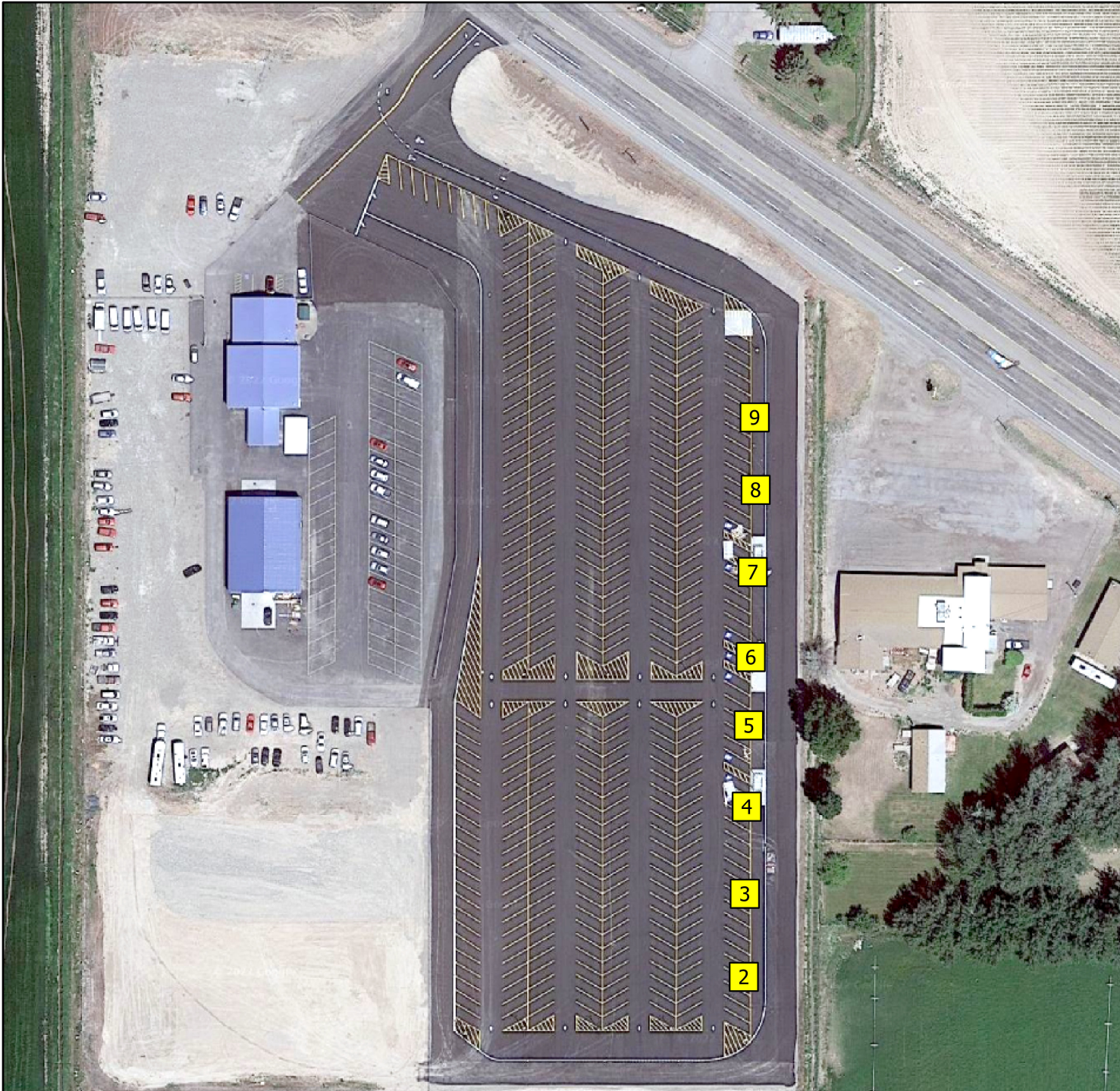
AMWTP Rt. 209 5:02 pm (Mon-Sun & hol)

### Load Point 8

MFC Shift Rt. 222 5:27 am (Mon-Thu)  
MFC Shift Rt. 222 5:42 am (Fri-Sun & hol)  
MFC Rt. 308 6:00 am (Mon-Thu)

MFC Shift Rt. 222 5:42 pm (Fri-Sun & hol)

### Load Point 9



GIS Analyst: Mindy Gerdes  
Date Drawn: 11/9/2023  
Path: Z:\Projects\INL\BusZones\BusZones.aprx  
File Name: BlackfootPnR  
<https://geospatial.inl.gov>