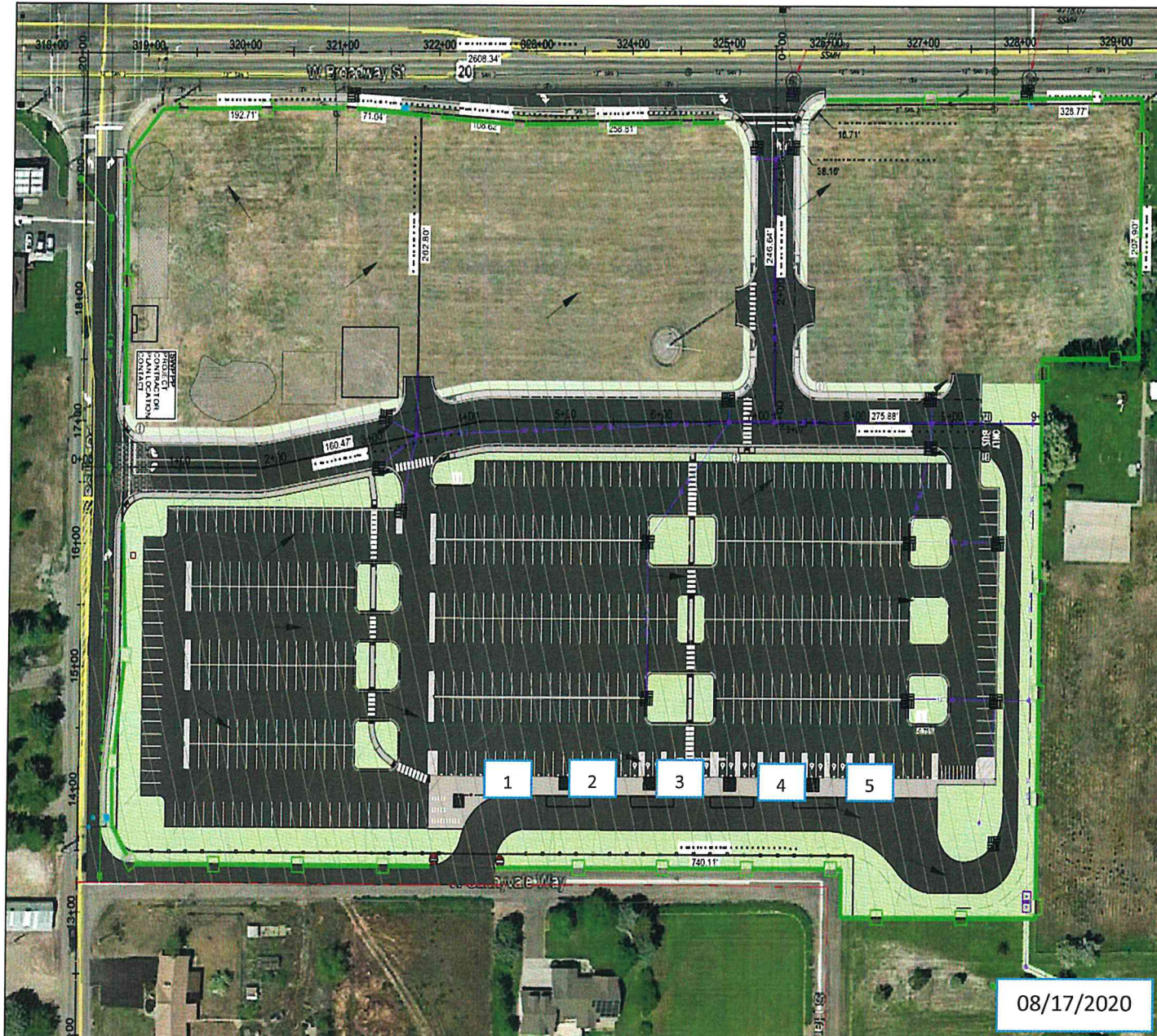


Westside Park-n-Ride

2455 West Broadway Idaho Falls, Idaho 83402



Load Positions



Load Point 1

- NRF Rt. 63 4:34 am (M-Th)
- NRF Rt. 57 4:55 am (M-F)
- SMC Rt. 316 5:20 am (Daily & hol)
- NRF Shift Rt. 83 5:25 am (Daily & hol)
- NRF Rt. 54 5:30 am (M-F)
- SMC Rt. 315 5:50 am (M-Th)
- SMC Rt. 115 5:50 am (M-Th)

- NRF Swing Rt. 584 1:30 pm (M-Th)
- SMC Rt. 316 5:20 pm (Daily & hol)
- NRF Shift Rt. 83 5:25 pm (Daily & hol)
- NRF Mid Rt. 585 9:30 pm (M-Th)

Load Point 2

- CFA Express Rt. 134 5:32 am (M-Th)
- RWMC Express Rt. 33 5:37 am (M-Th)
- CFA Rt. 8 5:56 am (M-Th)

Load Point 3

- MFC +1 5:12 am (M-Th)
- ATR Express Rt. 35 5:32 am (M-Th)
- MFC Shift Rt. 125 5:47 am (M-Th)
- MFC Shift Rt. 125 6:02 am (F-Su & hol)
- ATR Rt. 4 5:57 am (M-Th)
- MFC Rt. 110 6:17 am (M-Th)

All CFA Shuttles (M-Th)

- MFC Shift Rt. 125 6:02 pm (Daily & hol)

Load Point 4

- INTEC Express Rt. 122 5:32 am (M-Th)
- BEA/Fluor Shift Rt. 31 5:42 am (Daily & hol)
- INTEC Rt. 9 5:45 am (M-Th)

- BEA/Fluor Shift Rt. 31 5:42 pm (Daily & hol)

Load Point 5

DRIVERS - At night pull to the farthest open point to unload

08/17/2020