

Shelley/New Sweden Park-n-Ride 4499 West Broadway Idaho Falls, Idaho 83402



Load Positions

Load Point 1

MFC +1 5:12 am (M-Th)
RWMC Express Rt. 33 5:40 am (M-Th)
RWMC/CFA Rt. 11 5:50 am (M-Th)
CFA/RWMC Rt. 8 6:00 am (M-Th)

Load Point 2

ATR Express Rt. 32 5:35 am (M-Th)
BEA/Fluor Shift Rt. 31 5:45 am
(F-Su & hol)
MFC Shift Rt. 125 5:50 am (M-Th)
MFC Shift Rt. 125 6:05 am (F-Su & hol)
ATR Rt. 4 6:00 am (M-Th)
MFC Rt. 109 6:20 am (M-Th)
MFC Rt. 104 6:20 am (M-Th)

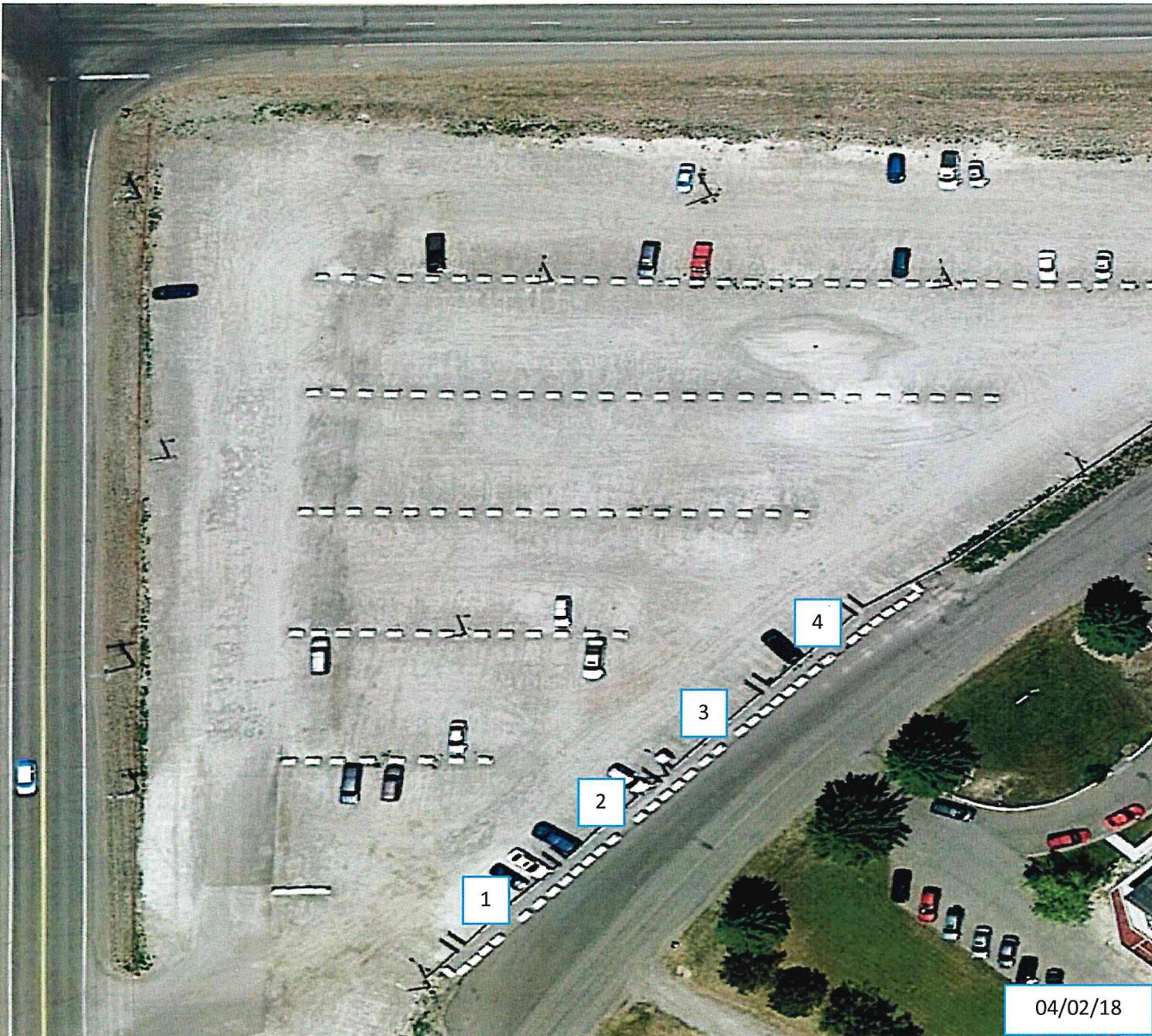
BEA/Fluor Shift Rt. 31 5:45 pm
(Daily & hol)
MFC Shift Rt. 125 6:05 pm (Daily & hol)

Load Point 3

NRF Rt. 57 4:51 am (M-F)
NRF Rt. 58 5:11 am (M-Th)
NRF Shift Rt. 83 5:28 am (Daily & hol)
NRF Rt. 60 5:33 am (M-Th)
INTEC Express Rt. 32 5:35 am (M-Th)
INTEC Rt. 9 5:52 am (M-Th)
INTEC Rt. 2 5:55 am (M-Th)
All CFA Shuttles (M-Th)

NRF Swing Rt. 583 1:37 pm (M-Th)
NRF Shift Rt. 83 5:28 pm (Daily & hol)

DRIVERS - At night pull to the farthest
open point to unload



04/02/18